



Expresso[®] Biotin Cloning & Expression System

Ultra-pure protein via *in vivo* biotinylation



- >90% pure protein in hours with minimal hands on time
- Integrated AviTag[™] sequence for efficient protein biotinylation
- Dual affinity tags (AviTag + 6HIS) for full length protein purification

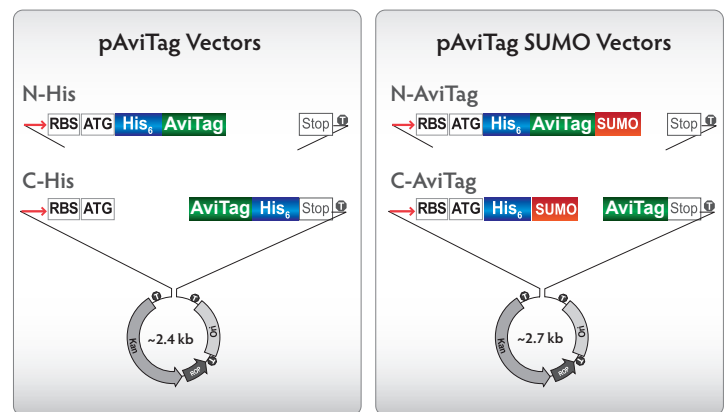
The Expresso[®] Biotin Protein Expression systems offer you the quickest route to biotinylated protein by combining AviTag[™] and Expressioneering[™] technologies. Simply prepare your insert by PCR and transform it along with the vector, and let the cells do the rest. Go from PCR product to biotinylated protein in 48 hours with minimal hands-on time.

Applications:

- Screening/Panning
- Protein:Protein Interaction
- Chromatin Immunoprecipitation
- Protein Microarrays

Expresso[®] Biotin

rhaP_{BAD} Rhamnose Promoter



T = Terminator → = Rhamnose Promoter

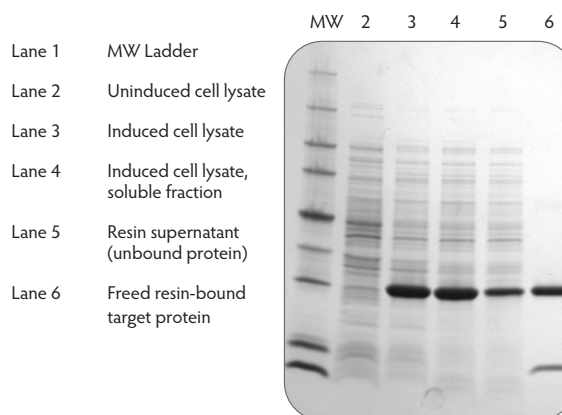
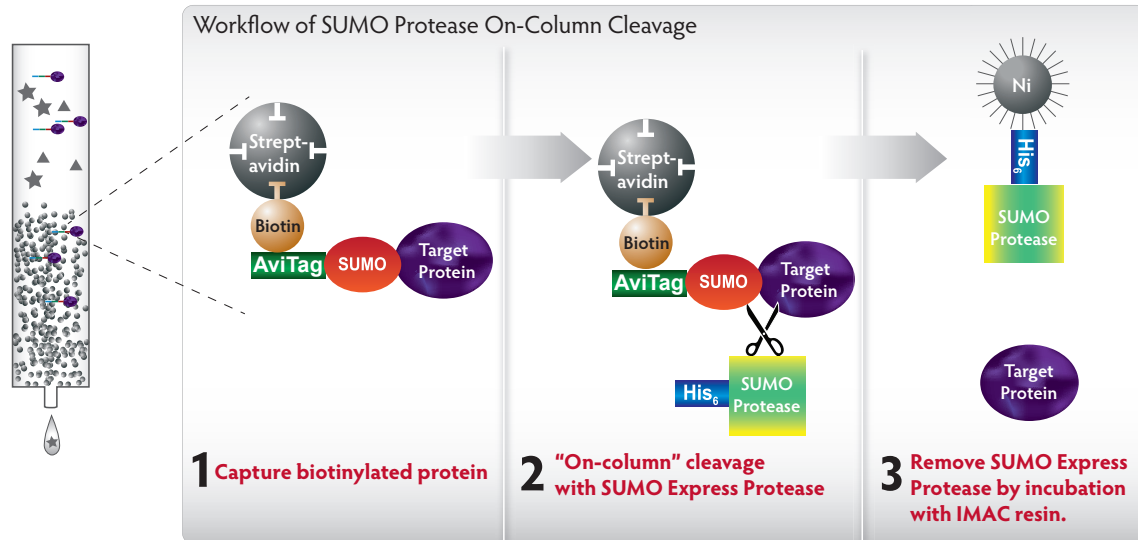


Figure 1. Expression and capture of biotinylated protein. Using a simple autoinduction method, a large amount of protein is expressed and is soluble (lanes 3-4). Due to efficient *in vivo* biotinylation, most of the target protein is biotinylated and captured using biotin streptavidin purification (lanes 5-6).

AviTag & SUMO: Together for the First Time



Ultra-pure protein is easier than ever Expresso Biotin vectors are also available with the SUMO tag, which increases solubility, protein yield and provides a specific protease site. Using the SUMO N-Biotin version of the vector, you can bind your protein to streptavidin agarose and perform on-column cleavage, leaving you with stringently purified, native target protein.

EXPRESSO BIOTIN IS PART OF LUCIGEN'S EXCLUSIVE
Expressioneering™ Technology

Surprisingly Simple Protein Expression

lucigen.com/expressioneering

Products	Cat. No.	Size	Price
Expresso® Biotin C-His System	49042-1	5 rxns	\$281
	49042-2	10 rxns	\$517
Expresso® Biotin N-His System	49041-1	5 rxns	\$281
	49041-2	10 rxns	\$517
Expresso® Biotin SUMO C-Biotin System	49044-1	5 rxns	\$391
	49044-2	10 rxns	\$699
Expresso® Biotin SUMO N-Biotin System	49043-1	5 rxns	\$391
	49043-2	10 rxns	\$699
Biotin XCell™ F' Chemically Competent Cells (SOLOs)	60704-1	12 rxns	\$128
	60704-2	24 rxns	\$218
Arabinose Solution, 1000X	49023-1	5 × 1.0 mL	\$54
Glucose Solution, 15% w/v	49022-1	5 × 1.25 mL	\$56
Rhamnose Solution, 20% w/v	49021-1	5 × 1.25 mL	\$56

ORDER INFORMATION

The Expresso® Biotin Cloning & Expression System contains pre-processed Vector DNA, single-transformation BIOTIN XCell F' Chemically Competent Cells (SOLOs), and recovery medium. Also included are BFP positive control insert DNA, transformation positive control pUC DNA, and forward and reverse PCR primers to confirm clones. For protein expression, solutions of Rhamnose, Biotin, Arabinose and Glucose are provided. SUMO kits also contain SUMO Express Protease and cleavage control protein.